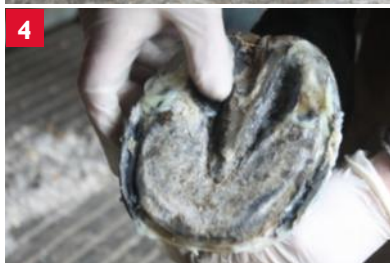
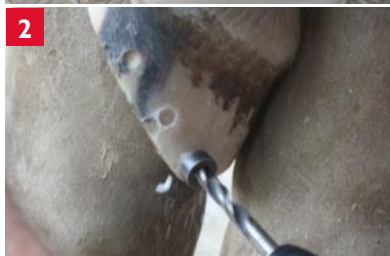


Fitting Procedure

IMPRINT[®]SPORT



- 1** • Select Imprint Sport shoe equal to hoof dimensions.
• Place in container on shoe support, ground surface up, to elevate rim.
• Add a small quantity of Imprint Hoof Repair material to container for later use (see 4).
• Add boiling water (100°C) to immerse rim only.
Softening and manipulating ground bearing parts is liable to weaken shoe.
• Heat shoe for approximately 2 minutes until rim is malleable.
- 2** • Prepare hoof by bevelling edge around toe, back towards white line to accommodate rim of Imprint Sport shoe. Rasp lower hoof and remove periople or soft horn from heel to heel to height of rim.
• Apply surgical spirit to underside of hoof only.
• Drill* 3-4 dowel key points 8-10mm diameter, 2/3 depth of wall as shown on both sides of hoof. This is essential for successful shoe retention.
** Using modified wood drill, centre shortened to 1mm with safety depth stop fitted.*
- 3** • Wear latex gloves.
• Whilst shoe is still heating, apply a thin layer of Imprint Structural Adhesive to outer lower hoof wall from heel to heel and into the bars to height of shoe rim.
• Hoof can be placed on ground.
- 4** • Take the softened Imprint Hoof Repair material from the hot water and form a skin around heels and into bars. Be careful not to handle adhesive on hoof wall.
- 5** • Quickly remove shoe from hot water by holding frog plate.
• Peel shoe support away from shoe, taking care not to deform rim.
• Position shoe centrally on hoof as shown, toe of shoe in line with hoof wall - not forward of it - heels parallel. Ensure contact with frog, leaving sole seating clearance.
• Using both hands, cup hoof. With fingers lying over shoe rim edge, press gently, ensuring even and blended bond between hoof wall and shoe rim.
• To retain strength, avoid stretching rim up hoof wall.
- 6** • When satisfied with position and fit, shoe cooling may commence.
• Using Imprint Shoe Freezer, spray all surfaces of shoe only. Do not spray any sensitive parts of the horse's foot.
• Ensure that shoe is completely hard before allowing weight bearing.
- 7** • Check that shoe rim and hoof wall bond is intact.
• Run a bead of Imprint Structural Adhesive around top of shoe rim and smooth with finger.
- 7a** • Stand for at least ten minutes or until adhesive has set.
• Fitting is complete.

SHOE REMOVAL

- Rasp away rim down to horn and peel away from heels using hoof nippers.
- Alternatively hoof nippers can be used carefully to cut rim away more quickly. Make sure shoe is completely detached before attempting to peel it off.

CAUTION Do not attempt to tear shoe from hoof as it is liable to cause damage.

USEFUL TIPS

- Ensure that rim has grafted and bonded well to hoof wall.
- Any re-modelling or modifications to shoe can be achieved by using a heat gun.
- When fitting to asymmetrical or damaged hooves, where there is a deficit of horn or extra strength is required in a certain area, extra adhesive and heated Imprint Hoof Repair material may be added before fitting the Imprint Sport shoe.
- For shoe graduation or lift, mould and weld heated Imprint Hoof Repair onto heated foot surface and rim of Imprint Sport shoe to create desired effect.
- For extra grip in icy conditions, use tungsten pins in both heels of the shoe.
- Imprint Equine Foot Care recommends hexagonal head studs. However, if square head studs are preferred (11mm), a 14mm washer must be placed between the shoe and the stud.

Imprint Equine Foot Care Town Forge, High Street, Malmesbury, Wiltshire, SN16 9AT, UK.
Adviceline: 01666 822953 Email: info@imprintsport.com Website: www.imprintsport.com

 Find us on
Facebook

www.facebook.com/ImprintEquineFootCare