



Quick Tips

for

Fitting Imprint Shoes

Quick Tips are designed to complement our Imprint shoe fitting instructions. Aimed at farriers and vets, we hope these tips will provide helpful information and useful advice when preparing the foot and fitting the shoes.

Do get in touch if you have any questions or find a Quick Tip useful. Comments can also be posted on our Facebook page.



www.facebook.com/ImprintEquineFootCare

www.imprintshoes.co.uk



Ensure maximum frog support.

Imprint Hoof Repair material can be added to the frog plate to provide extra supportive contact.



Using adhesive in cold weather conditions.

In winter conditions, the Imprint Adhesive must be up to temperature to cure properly (approx 20° C). This can be achieved by warming in a pocket or placing on the top of a kettle when heating the water for the shoe.



Check deep seating of shoe at the toe.

After fitting make sure there is sufficient clearance around the toe area. A shoeing nail can be used to remove or check for excess plastic or adhesive.



Match the shoe length with the foot.

The Imprint First oval shoe can be shortened if necessary by removing part of the heel of the shoe with hoof nippers. Then when fitting, blend the heel of the shoe up to the foot.



Harden shoe before weight-bearing.

The shoe must be completely hard before the foot is allowed to weight-bear. Use Imprint Shoe Freezer all over the softened shoe to speed the process.



Rim height.

Do not stretch the rim of the shoe up the hoof; keep it at its original height thereby maintaining shoe strength and integrity



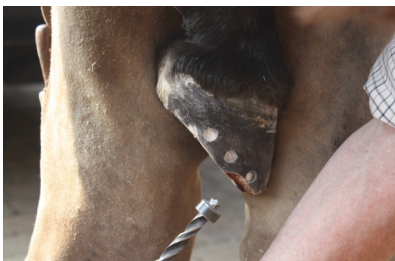
Aerosol spray.

On the rare occasion a horse is concerned about the noise of the Shoe Freezer spray, just trickle the spray into a sponge or cloth held against the shoe, being careful not to move the shoe while it's still soft. Or get somebody to spray it into a sponge out of ear shot each time, until the shoe is hard.



Add a bead of adhesive around rim.

Once the shoe is fitted and is back to its original state, seal around the top of the shoe rim with a bead of adhesive where it makes contact with the hoof.



Indentations.

Ensure the size and number of indentations are adequate for the size of foot.



Match shoe to foot.

Imprint shoes are available in a range of types and sizes and come in the following shapes; Oval, Round and Hind. Because of the versatility of the material, sometimes it may be advantageous to use a hind shape shoe on a front foot.



Fit to sound horn.

Before fitting, trim to sound horn and ensure the foot is clean.



Attend a training course.

Attending a course in new farriery techniques will provide the participant with clear, practical procedures to deal effectively with many farriery issues using these modern materials.